

## OVERVIEW

### Features

The *Trellis*™ Power Insight Application is designed to monitor your Liebert® UPS devices and provides real-time trending for critical UPS performance including voltage and current utilization. Other capabilities include:

- Consolidated view of distributed UPS equipment
- Automated device discovery
- Alarm views that are sorted or filtered
- Summary view of individual devices with specific device metrics
- Access to individual device Web Interface

### Benefits

The *Trellis*™ Power Insight Application is simple to install and use; there is no need for a professional services engagement. Other benefits you immediately receive include:

- Reduction in overhead maintenance cost
- Fast deployment through auto discovery
- Time savings in monitoring critical infrastructure devices
- Maximizes investment while adding value to UPS purchases

### Problem

Uninterruptible Power Supply (UPS) units are critical infrastructure devices that protect the valuable hardware crucial to ongoing business operations. Many IT departments are short on worker resources to efficiently manage these critical devices, thus affecting reliability of the original design, so they can be overloaded or lose the redundancy and reliability of the original design. This can lead to damage and unexpected downtime when a power event occurs. Customers may have purchased the best hardware technology but are frequently required to purchase additional software to maximize their investment to achieve the protection they really need.

### Solution

The *Trellis*™ Power Insight Application is a web-based application designed for users with a distributed UPS infrastructure and who are currently using Liebert UPS product lines including Liebert® GXT3™, Liebert GXT4™, Liebert APM™, Liebert APS™, Liebert EXM™, Liebert PSI™, and ITA2-SIC (for Asia markets). It is a simple to install, simple to use application that is intended to provide a consolidated point of reference for users having multiple UPSs that need to be managed. With the ease in which the software can be downloaded and installed, along with the auto discovery capability, users will be monitoring their UPSs in just a matter of minutes.

*Trellis*™ Power Insight Application provides real time data monitoring as well as trended data for voltage, power, and frequency. This simple but powerful tool can manage the following six common power problems in the data center:

- Power Failure – Total loss of utility power
- Power Surge/Spike – Short-term voltage event that exceeds 110% of normal
- Power Sag – Short-term low voltage event
- Brownout – Under voltage event that occurs for a few minutes to a few days
- Over-Voltage – Increase in voltage event that occurs for a few minutes to a few days
- Frequency Variation – Loss of stability in the power supply's normal frequency of 50 or 60 Hz

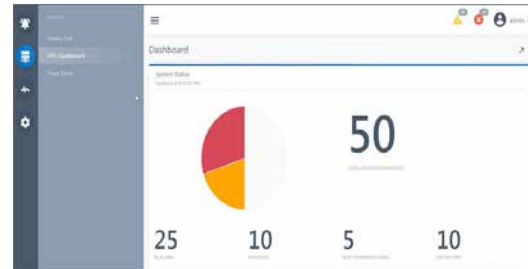
# TRELLIS™ POWER INSIGHT APPLICATION

A Vertiv™ Application Brief



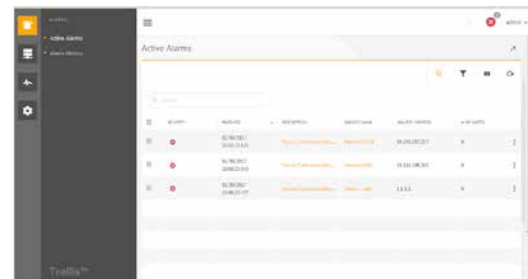
## The Trellis™ Power Insight Application:

- Captures SNMP alerts from devices
- Configures email alerts from incoming device alarms
- Configures and emails alerts when devices lose communication with application
- Displays alarms and device data
- Displays active alarms and their counts
- Displays devices the system is monitoring
- Delete devices and their data
- Display current device readings
- Display key data points
  - Output capacity load percentage
  - Battery percentage charge
  - Battery time remaining (minutes)
  - Output Current



## Dashboard

Comprehensive easy to read dashboard featuring UPS status, alarms and notifications



## Alarm Summary

Manage and track devices based on the criticality of their alarm state



## Device Details

Quick view to understanding the health of individual UPSs

## Power Insight Specifications

Trellis™ Power Insight Application can be installed on a 64-bit machine with 4Gb memory, 2+ Ghz CPUs, 64GB free disk space and running either Microsoft Windows 7, 8.1, or Server 2012 and RHEL 7. The recommended browser for both desktop and mobile devices is Google Chrome version 46. Other browsers supported include IE11, Firefox 42 and Safari Mobile 9